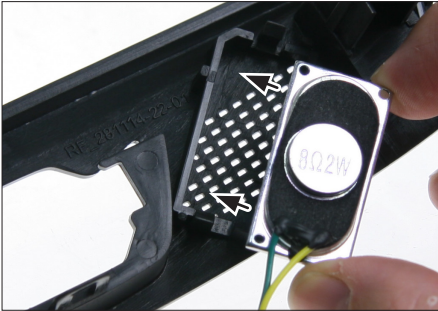


## Installation Manual Double DIN Kit



20. as needed fix speaker with cyanoacrylate adhesive

*Spare OEM hazard light switch by Ford required. Ford Part-No.: 1519127*



21. Mount  
- air vents  
- hazard light switch to facia plate

Push facia plate on dash board until it snaps in



22. Fix facia plate with 2 OEM screws (see arrows)



23. Re-install everything in reverse order to finish installation



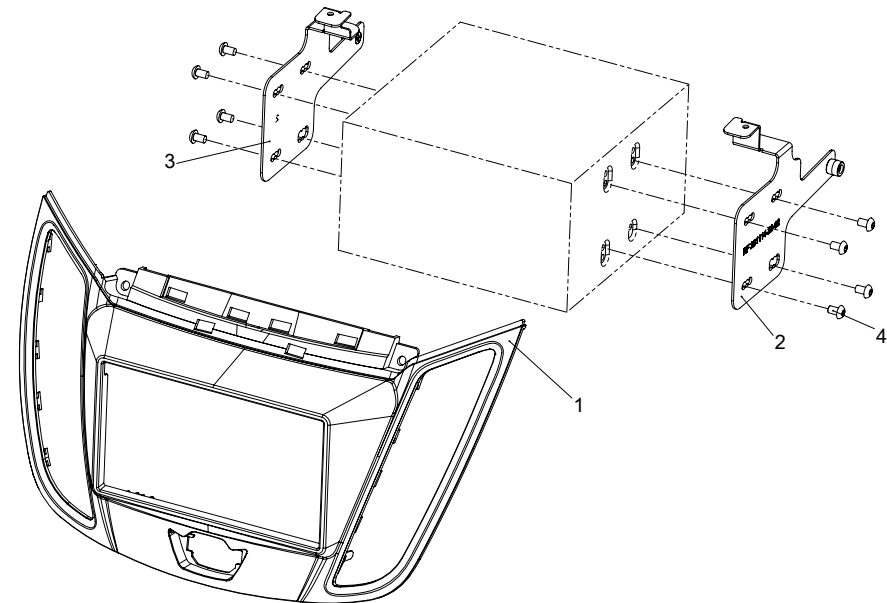
## Installation Manual Double DIN Kit

piano black:	381114-22-1
dark grey:	381114-22-2
dark brown:	381114-22-3
matt black:	381114-22-4

- Ford Ford C-MAX (DXA) 12/2010->
- Ford Kuga (DM2) 03/2013->

Compatible with these double DIN devices

### Double-DIN Navigation



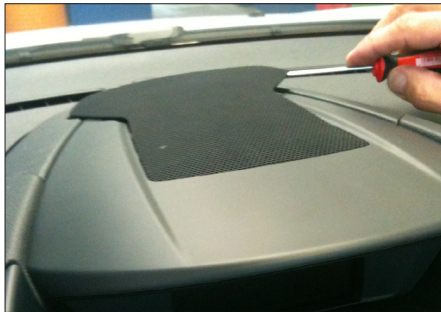
Spare OEM hazard light switch by Ford required  
Ford Part-No.: 1519127

- Double DIN Kit contents
- (1) Facia Plate
  - (2) Mounting Bracket right
  - (3) Mounting Bracket left
  - (4) flat headed screws

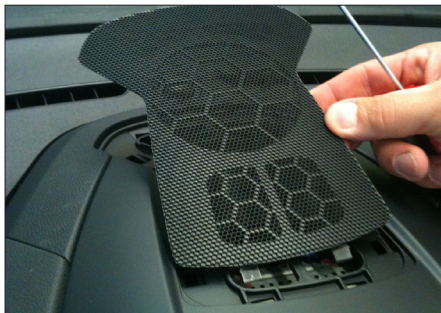
# Installation Manual Double DIN Kit



1. Ford C-MAX with OEM radio



2. Unclip speaker grill at top of dash board carefully



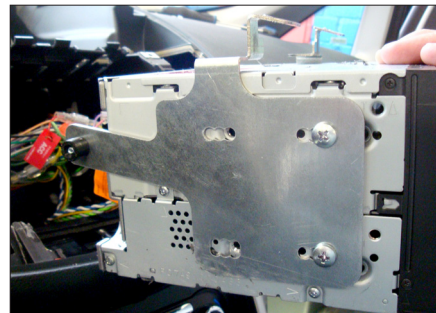
3. Remove speaker grill



4. Unclip cover of center console



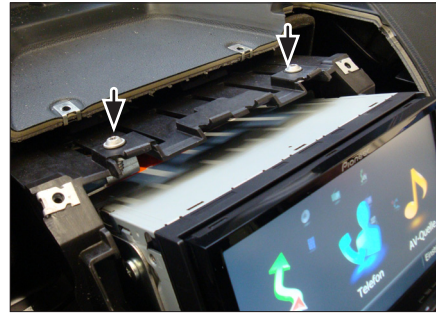
17. Dashboard after plastic cut out



18. Fix mounting brackets to Double DIN head unit

Connect all required circuit points

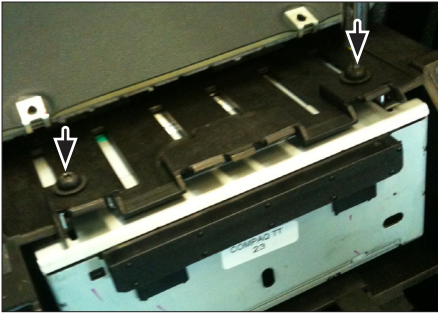
Push Double DIN head unit into dash board



19. Fix Double DIN head unit



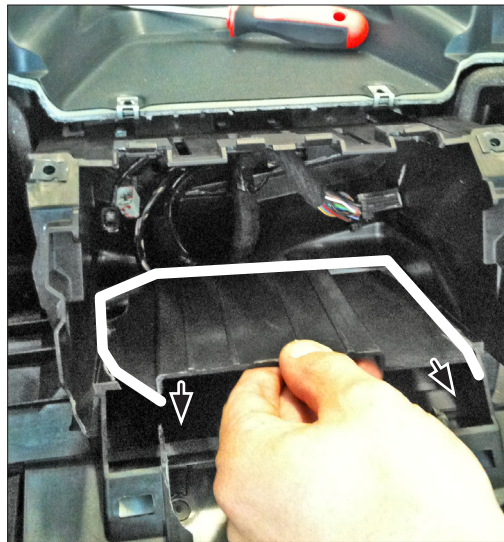
# Installation Manual Double DIN Kit



14. Remove screws of OEM Radio/CD unit  
Remove OEM Radio/CD unit



15. Cut away plastic to clear space for Double DIN head unit



16. Remove plastic



6



5. Remove screws of center console



6. Unclip cover center console



7. Remove top panel cover

3



# Installation Manual Double DIN Kit



8. Unclip display



9. Remove display



10. Unclip center panel



4



11. Remove screw (see arrow)



12. Remove screws on top of OEM head unit (left and right)



13. Unclip air vents  
Remove air vents



5